

June Week 1

Kingdom Quest

June Week 1

Large Group Prompts

Countdown/Worship Song #1: Great Big God

Key Question/Bottom Line: Teach this for the first time!!

Who can be part of God's Kingdom?

I can be part of God's Kingdom!

Monthly Bible Verse: Teach this for the first time!!

"Your Kingdom come, Your will be done, on earth as it is in heaven." Matthew 6:10

Bible Story Intro:

Friends, this summer we are going on a quest – we have a mission to look for a kingdom. The kingdom of the King of Kings and the Lord of Lords – God's kingdom! But God's kingdom isn't a place we can find, it's something that happens inside of us and all around us. It can be hard to understand a kingdom that isn't a place, so Jesus told lots of stories to help us understand what God's kingdom is like. Today we're going to hear a story Jesus told about a teeny tiny seed and what it can teach us about God's kingdom. Let's watch to see what Jesus said!

Ollie Video: Mustard Seed

Bible Story Recap

Jesus said that God's kingdom is like a teeny tiny seed, that grows bigger and bigger until everybody gets to be part of it! God's kingdom can grow in me, and it can grow in you, when we do little things to show love to the people around us! And the more we love others, the bigger and bigger and bigger the kingdom grows! God wants all of us to be a part of His kingdom and share His love with everyone we meet!

*Friends, let me ask you that important question one more time – **Who can be part of God's Kingdom? I can be part of God's Kingdom!** Let's say it again! **Who can be part of God's Kingdom? I can be part of God's Kingdom!***

Sample Prayer:

"Dear God,

Thank you for inviting me to be part of your kingdom.

Help me to share your kingdom so it can grow bigger !

We love you, God. In Jesus' name, Amen.

Worship Song #2: Always With Me

June 2026
MEMORY VERSE MOTIONS

KINGDOM QUEST

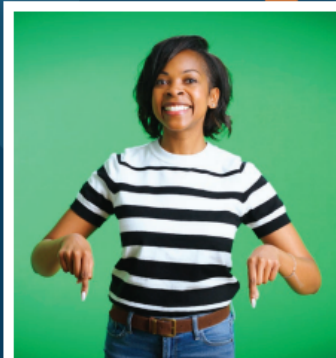
Seeking the Greatest Treasure



"Your kingdom come



your will be done,



on earth



as it is in heaven."



Matthew 6:10